

Getting Started with your Tableau Desktop Trial

Welcome to Tableau Desktop 6.0. Follow along to learn how to download and activate the trial, connect to data, and build views.

1. Download & Activate Trial

2. Connect to Data

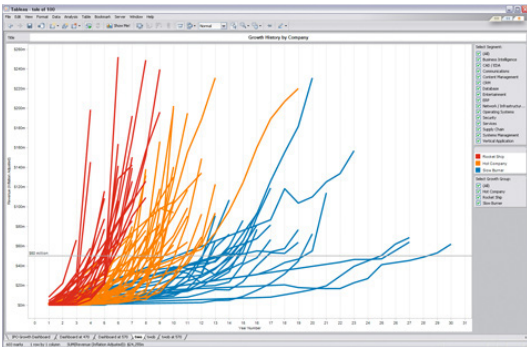
3. Create Your First View

4. Learn More About Tableau

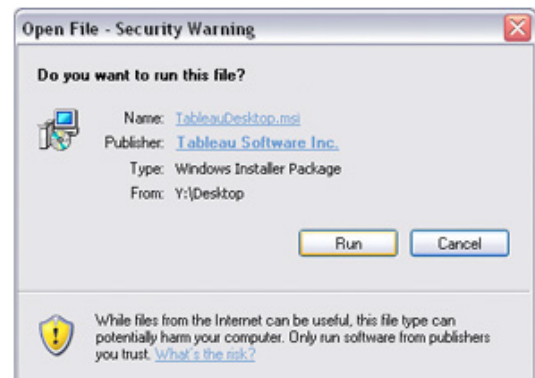
Download & Install Trial

Thank you for your interest in exploring a free, 14-day desktop trial. Downloading the trial and getting started is easy, just follow these steps.

- 1 Go to: www.tableausoftware.com/trial**
 Click the **Download Now** button below Tableau Desktop, the file will start downloading automatically.



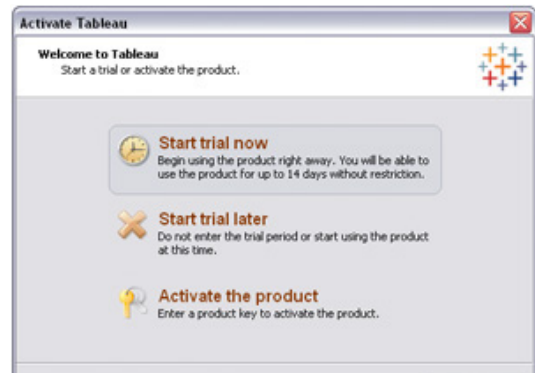
- 2 Start the process by clicking “Run”.**
 Depending on your connection speed, the download may take up to a few minutes.



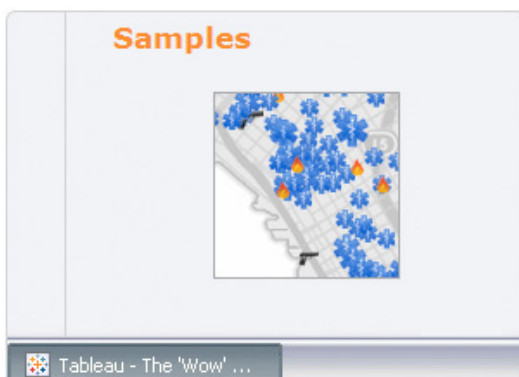
- 3 Accept the License Agreement.**
 View the agreement, check the **Acceptance** box, click **Install** and follow along to install the trial.



- 4 Activate Tableau.**
 Click **Start Trial Now** to begin exploring your copy of desktop. Follow the on-screen instructions to register.



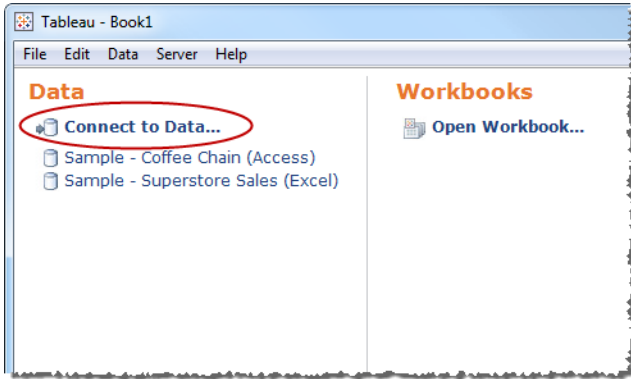
- 5 Dive Right in.**
 Connect easily to your own data or start with one of our sample workbooks and begin to explore.



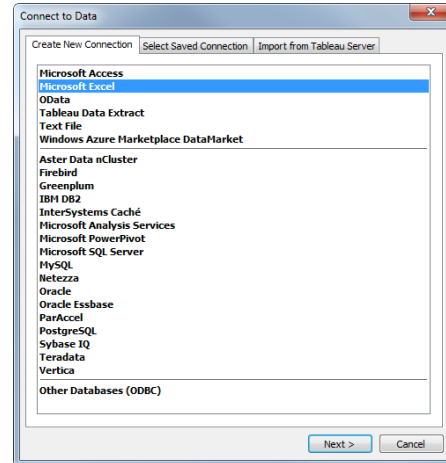
Connect to Data

The first thing to do when you start Tableau is connect to a data source. Follow the steps below to connect to a sample Excel workbook that comes with Tableau.

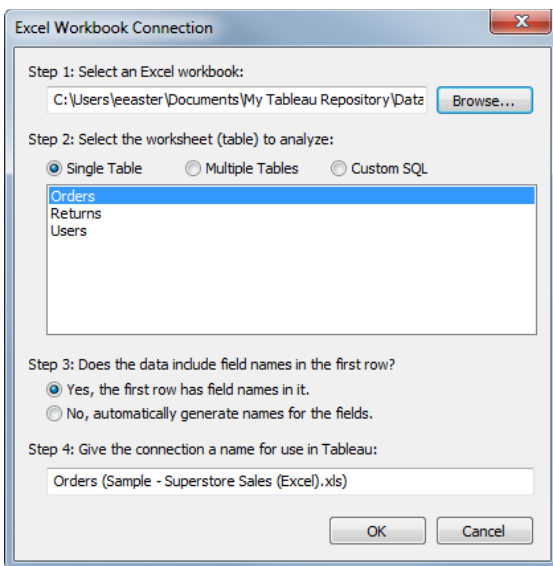
1 Select Connect to Data on the start page.



2 Select the type of data source. For this example, select Microsoft Excel and click OK.



3 Set up the connection. Click Browse to select the Sample-Superstore Sales workbook located in the Datasources folder in your Tableau Repository. Then select the Orders worksheet and click OK.



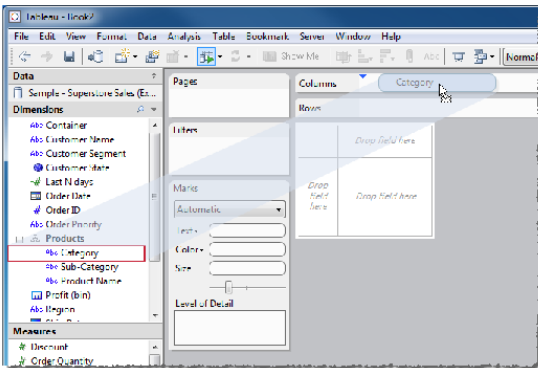
Your Tableau Repository is located in your My Documents folder.

Note: If you are having problems connecting to an Excel workbook of your own, make sure each worksheet is organized into rows and columns properly. To see an example of how to set up your Excel data, open the sample file that comes with Tableau. You can find it in your documents folder located at: **My Tableau Repository\Datasources\Sample - Superstore Sales (Excel).xls**.

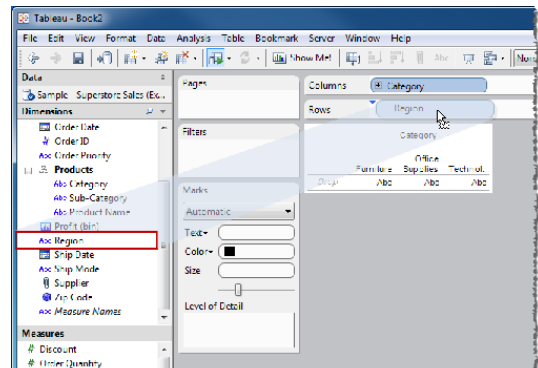
Create Your First View

After you connect to a data source, fields are displayed on the left side of the workbook as Dimensions and Measures. Create views by dragging and dropping fields onto shelves.

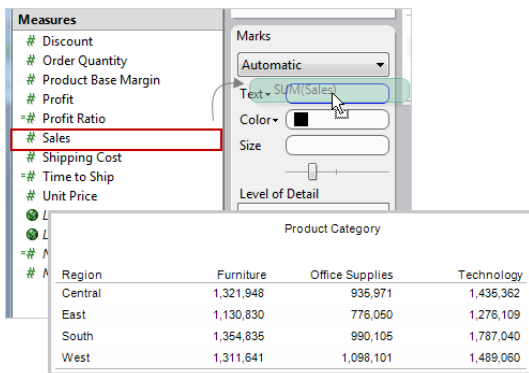
- 1 Drag a dimension to the Columns shelf.**
Click and drag the **Category** field and drop it on the **Columns** shelf.



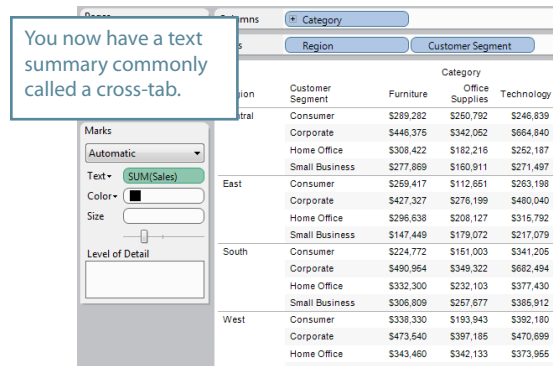
- 2 Drag a dimension to the Rows shelf.**
Click and drag the **Region** field and drop it on the **Rows** shelf.



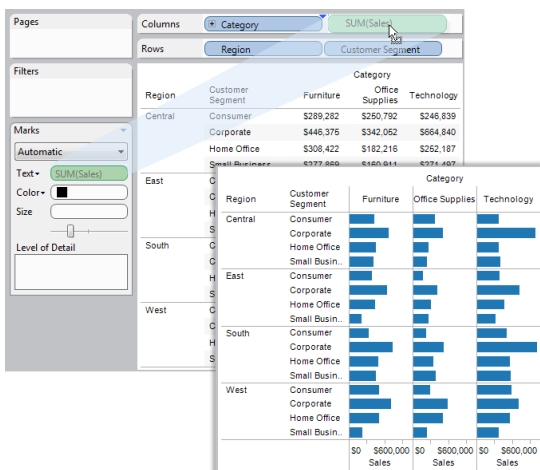
- 3 Drag a measure to the Text Shelf.**
Click and drag the **Sales** measure and drop it on the **Text** shelf.



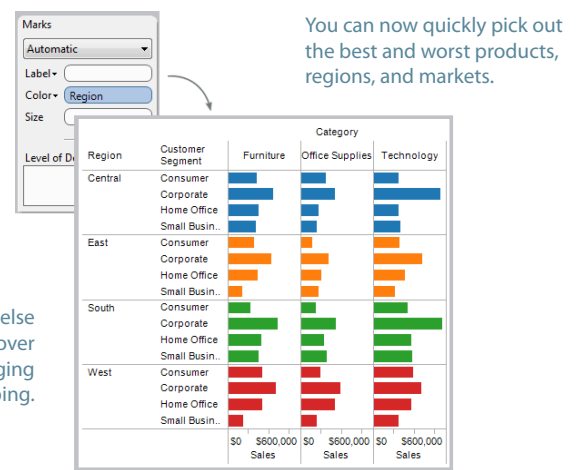
- 4 Drag another dimension to the Rows shelf.**
Click and drag the **Customer Segment** field and drop it on the **Rows** shelf.



- 5 Visualize your data.**
Drag the **Sales Total** measure from the Text shelf and drop it on the **Columns** shelf.



- 6 Use color to show more information.**
Drag the **Region** dimension from the Data window and drop it on the **Color** shelf.



See what else you can discover just by dragging and dropping.



Live Online Training

Tableau offers FREE live training on the web.
Tune in to learn more!

[Register Now!](#)

visit <http://www.tableausoftware.com/learning/training>

Check out these additional resources on the Help menu:

Help > Sample Workbooks

The sample workbooks contain samples that highlight some of the amazing things you can do with Tableau.

Help > Community Center

Find additional resources online in the Community Center. Get help, browse the discussion boards, and see what others are doing with Tableau.

Help > Help Topics

View the online help for complete discussions of the features and functions.