



6 Myths of Moving from Traditional to Modern BI

IT'S NO MYTH OR MYSTERY

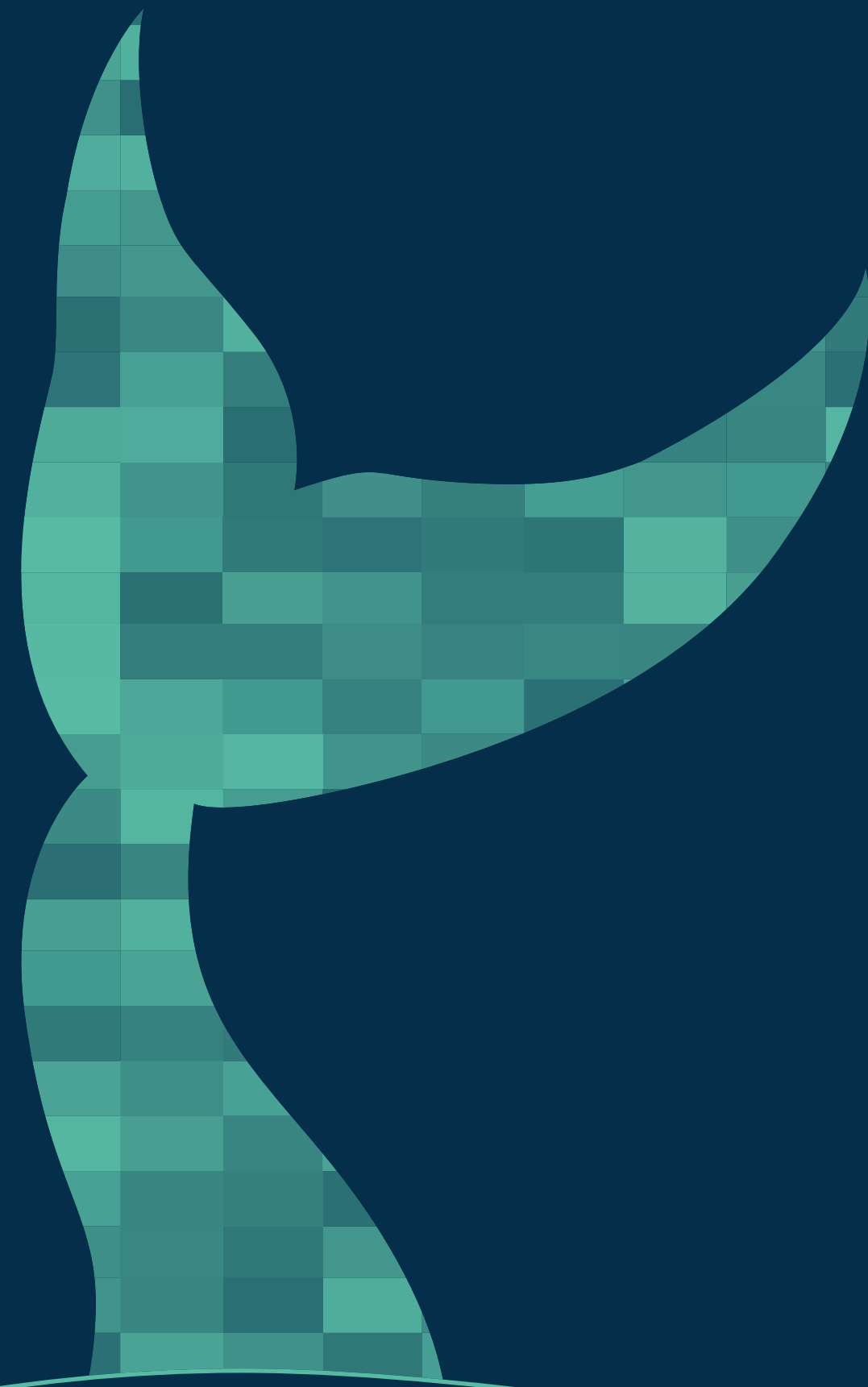
that digital transformation has created a massive influx of information; data is everywhere, all the time, and it's not slowing down. With this influx of data, everybody expects to be able to access and use new information to inform day-to-day decisions and quench their business curiosity. And now, modern business intelligence has lowered the barrier to entry to widespread, secure, and governed data access and analysis. Today's analytics platforms not only help organizations get more value from their data, but empower more people to visually explore data and share their insights.

Traditional BI has primarily served to illuminate the known unknowns; users ask specific questions and IT-led reporting provides them answers, repeating the cycle with new questions to get additional insight. Modern BI has opened new doors for users across all skill levels to explore unknown unknowns—to not only ask and answer their own questions, but to arrive

at impactful insights that they weren't initially seeking. All the while, the modern analytics platform balances business agility with IT's need for security and governance.

In spite of the promises of modern BI, some organizations are hesitant to invest, clouded by misunderstandings or afraid to navigate the challenges to migrate and adopt a modern solution. This holds organizations back from unlocking the creative potential and enhancing the decision making of their employees that the right analytics platform and strategy can provide.

In this eBook, we'll explore common myths and misconceptions about moving from traditional to modern BI.



MYTH #1

Traditional BI already has a solution for visual analysis and data exploration

As you set sail on your journey to modern business intelligence, don't be lured by a beautiful dashboard under the guise of true, agile analytics. Unless you can discern the self-service processes of visual analysis from simply creating a visualization, your BI efforts may be headed for shipwreck—or at the very least anchored in stagnant waters. Be wary of vendors offering just enough “modern” functionality to keep you supporting their accompanying technologies. Are they investing in your success with visual analysis, or trying to to maintain a market share? Mind the motive beneath the song each solution is singing and you'll sail on to new, transformative waters.

MYTH #1

In the 2018 Magic Quadrant for Analytics and Business Intelligence Platforms, Gartner writes: “Visual-based data discovery is a defining feature of the modern analytics and business intelligence platform. This wave of disruption began in around 2004, and has since transformed the market and new buying trends away from IT-centric system of record reporting to business-centric agile analytics with self-service.”

True visual analysis makes data easy to explore by using the visual as an interface for the data, not simply as a way to display a result. Many traditional tools retain antiquated processes that require a set of predetermined criteria to create visualizations, only to limit the insight end users can glean as a viewer. What happens when they have follow-up questions or need to pivot their analysis? Do they go back to IT and wait?

The transformative value to the business is not in an end result, but in the availability of new insights that users discover along the way as they visually explore the data. With a modern BI solution, immediate visual response allows limitless, self-service data exploration. Reaching additional insights aren’t constrained by initial requirements, nor is deep technical expertise required to ask iterative questions and pivot the analysis.

“It’s like giving you a flashlight, and you’re able to look at the corner of that dark room that you’ve never been able to see before.”

- Tom Laney, Business Consultant, Data Science Center, Southwest Airlines

[Learn how Southwest Airlines brought new insights to 36 departments >](#)

Tableau is on a mission to help people see and understand data. There are many ways we enable visual, self-service analysis, data discovery, and exploration.

- VizQL, our patented visual query language, provides immediate step-by-step visual feedback as it translates drag-and-drop actions into queries and visual results right before your eyes—no “building” vs. “viewing” modes.
- Show Me is a powerful feature that suggests the best visualization types based on the data you’re working with. You don’t have to know the end format. Just select the data that might help you answer your question and explore the suggested chart types.
- Built-in mapping abilities include display data by country, state, city, and more without latitude or longitude. Tableau automatically recognizes geographic fields, and supports spatial files, linear geometries, dual-axis maps, and more.
- Statistical and advanced analytics are made simple with drag-and-drop trend lines, distribution bands, clustering, and more.
- Date hierarchies allow you easily move from years to quarters to months to days, or easily define custom drill-down paths. Tableau automatically recognizes and supports dozens of date formats.
- Metadata management is equally simple and visual. Perform cross-database joins, create sets, groups, and hierarchies, or exclude columns, rows, or values (like outliers) with just a few clicks. Do any of this mid-analysis without having to start over.
- Smart recommendations make insights even easier, including surfacing certified and popular data sources as well as published content with high traffic and engagement.

* Gartner does not endorse any vendor, product or service depicted in its research publications, and does not advise technology users to select only those vendors with the highest ratings or other designation. Gartner research publications consist of the opinions of Gartner’s research organization and should not be construed as statements of fact. Gartner disclaims all warranties, expressed or implied, with respect to this research, including any warranties of merchantability or fitness for a particular purpose.

An illustration on the left side of the slide depicts a graveyard. There are three pixelated, grey tombstones of varying shapes and sizes. The background features several stylized trees with thin, light-colored trunks and branches. The entire scene is set against a dark blue background.

MYTH #2

Modern BI can be evaluated like traditional BI platforms

Embracing a modern BI platform means letting go of the past. A powerful, modern approach to analytics demands appropriate evaluation criteria. Certain aspects of your traditional BI system that served you well may hold you back from success with a modern platform. Don't let antiquated processes haunt your organization. It's time to pay your respects to the feature checklist of yesterday and follow the bright light—not of transcendence, but of transformation.

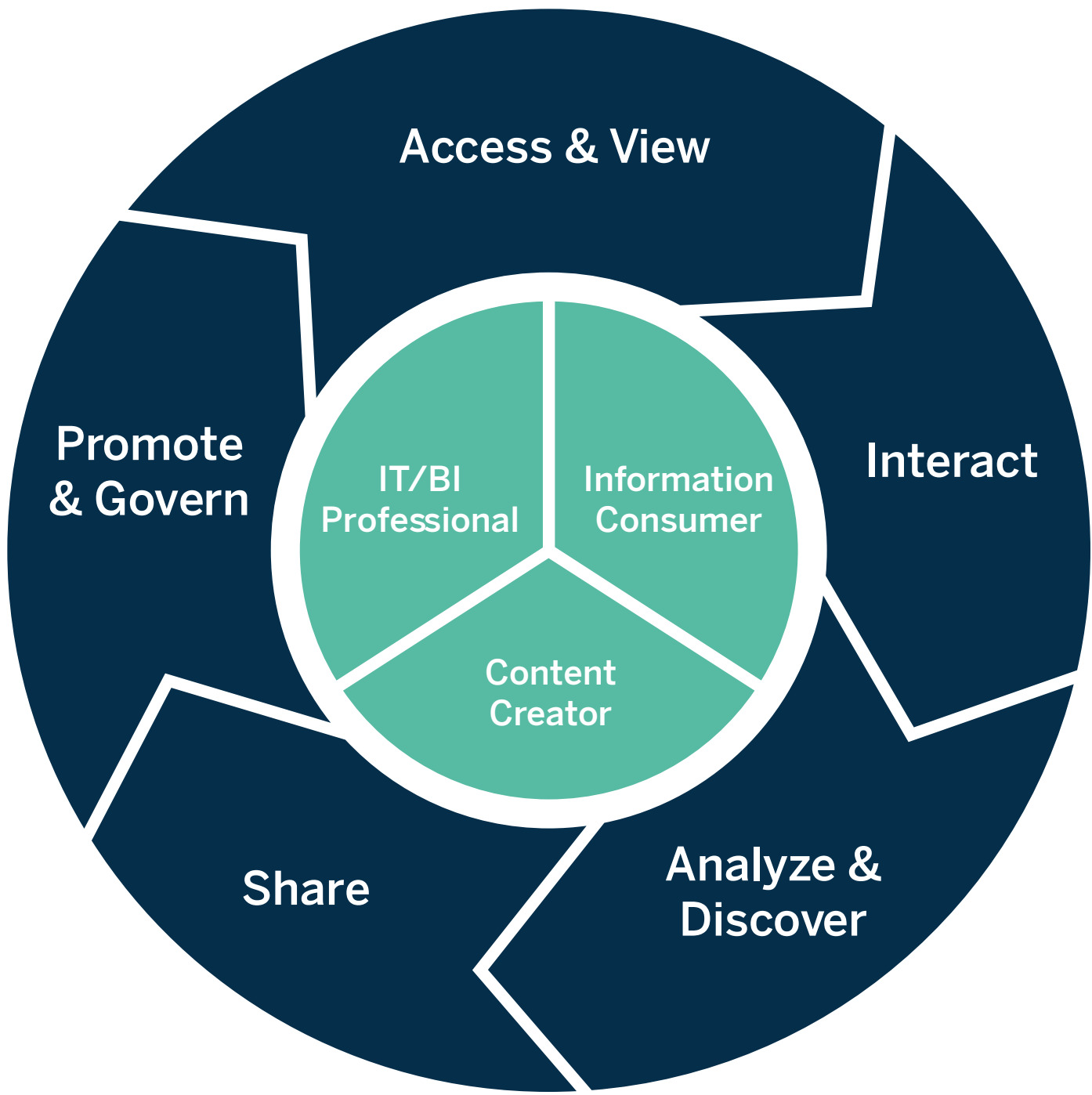
MYTH #2

It's clear from the first myth that the greatest value of modern BI comes not from the destination, but how your users get there. And just as critical as the journey to insight is the journey to selecting your modern analytics platform. When so much transformational potential lies in the experience of visually working with data (and not just the final results it can produce), it doesn't make sense to evaluate a modern solution solely on the end visualizations possible.

Think of it this way: An airplane and a car can each get you across the country, but the experiences and processes involved are vastly different. Would you use the same criteria to choose a car as you would to book a flight? What about the bag you'd pack for the trip, or the meals and activities you'd plan for when you're en route? Not every traditional analytical capability has value in a modern platform when the way you arrive at insight is so different.

To ensure your organization's investment in a modern analytics succeeds, you'll need to to work collaboratively—IT and the business, together—to understand how modern BI will help your organization reach success. This means a clear understanding of the roles, responsibilities, and processes of the modern analytics workflow alongside the right depth of analytical ability and ease of use in a modern analytics technology.

THE MODERN ANALYTICS WORKFLOW



Here are some important criteria to consider when selecting your modern BI platform:

- **A smooth experience from integration to accessibility**

- Do users have to switch products, modules, or otherwise interrupt their flow?
- What is IT's role in the process of users getting answers from the data?

- **Flexible deployment options**

- Does the platform restrict or dictate your architecture and data strategy?
- Does it scale up and out as needed in a straightforward manner?

- **Fast adoption at scale**

- Is installing, configuring, and managing the platform clear?
- Are the analytical capabilities simple to navigate and powerful enough to meet the needs of your users, including non-technical ones?

- **Effective user enablement**

- What are the available training, help, and community resources surrounding the platform?
- How is the vendor's reputation for resolving issues, engaging with and empowering users?

- **Clear pricing and packaging**

- Is the model transparent, flexible, scalable?
- Do the licensing options offer the right features and value for the price?

Dive deeper into these and other important considerations with our [Evaluation Guide](#) >



MYTH #3

The cost of moving to modern BI isn't justifiable

Deploying a modern analytics solution doesn't mean you have to burn everything down and rise from the ashes to find success. Perceived costs may ruffle your feathers, but there is immense value and potential cost savings with careful consideration and planning. When you ignite a curiosity and passion for data, it can lead to huge benefits—from massive amounts of time saved to new insights that increase efficiency and reduce costs.

MYTH #3

You’ve poured money, time, and resources into your data strategy, so it’s natural to feel fear and anxiety at the thought of pivoting such an investment. Fortunately, you don’t have to break the bank to make the transition possible, because modern BI can leverage the technology investments you’ve already made to support your data strategy. Additionally, strategic timing of the migration can help to minimize spend, while valuable training and support resources can speed up your time to market and adoption, helping your organization see greater benefits from modern BI faster.

Total cost of ownership

It’s more than the price of a software seat; consider the multi-year cost of infrastructure, deployment, maintenance, and full-time IT employees to deploy, support, and scale the system. If you have to license and connect a stack of products or disconnected tools to get the full value of your modern analytics solution, that’ll only add costs and complexity to the deployment, maintenance, and administration.

Analysts report a 29–39% lower TCO for Tableau

<p>Tableau has a lower TCO, provides a higher business value, and allows users to create BI solutions in 20% of the time of most incumbent products.</p> <p><i>Source: International Institute of IT Economics Study of Modern Business Intelligence Implementations, 2017.</i></p>	<p>“Modern business intelligence specialists have the lowest three-year analytics and BI platform ownership cost per user, largely driven by lower IT support costs.”</p> <p><i>Source: Gartner Survey Analysis: Analytics and Business Intelligence Platform Ownership Costs, 2017.</i></p>
---	--

[Learn more and read the reports >](#)

Maintenance and migration timing

Another way to potentially reduce costs of moving to modern BI is to time your migration with your traditional platform’s maintenance renewal. The perfect window of time will vary from organization to organization based on which traditional platform you’re using and the complexity your data pipeline and environment. You’ll need to scope the work and establish a timeline that accounts for the proper training and testing to validate your new solution and optimize this period of overlap to minimize spend.

Some organizations feel that the immediate benefits of self-service analysis are worth the move, even if they are early into a renewed maintenance contract. Through a proof of concept, you may see the potential time or cost savings, increased efficiency and collaboration, and new insights to justify the spend of a longer coexistence before sunseting your traditional solution. Alternately, should you discover that certain use cases don’t make sense to modernize, optimizing costs becomes a matter of scaling each solution to the right users and use cases.

Time to market and adoption

IT has too often deployed a solution—even one in high demand from the business—only to see adoption stall or drop off. With much of modern BI’s success reliant on engagement, you’re only guaranteed lasting value if your investment is sticky. Engagement is a shared responsibility, but creativity and aid can offer plenty of encouragement. As you weigh the costs and value of moving to a modern BI platform, don’t forget to factor in customer success resources that can speed up your time to market and adoption—including training, help documentation, forums, and the user community.



MYTH #4

All I need to reap the benefits of modern BI is the right technology upgrade

The right modern BI technology is critical for company-wide transformation, but much like a full moon on a clear night, it's just an enabler in the transformation process. Data-driven decision making requires changes in the very fabric, or DNA, of the organization, to awaken the thirst for data in your people. This means IT and the business must collaborate—with clearly defined roles and new processes—to help employees balance their instincts with new insights. It may sound like a hair-raising venture, but with a tight strategy, your change management efforts won't be met with torches and pitchforks.

MYTH #4

Modern BI adoption requires a thoughtful strategy to ensure success. In addition to updating the technology, IT and the business must work together to navigate changes in analytics roles and responsibilities, processes and pipelines, and how success is measured. Fortunately, the ease of use and powerful insights of modern BI often make business users more excited than wary to participate.

“When we first started with Tableau, we were just thinking about dashboarding and reporting. We never thought Tableau would fundamentally change the DNA of the organization.”

- Ashish Braganza, Director of Global Business Intelligence, Lenovo

[Learn how Lenovo increased reporting efficiencies by 95% >](#)

Remember the airplane vs. car analogy? Installing a modern BI platform and expecting great results without addressing organizational and behavioral changes is like giving your employees a plane—and then wondering why they’re driving it down the freeway.

Here is a helpful framework to consider when rolling out your modern solution so your employees can feel supported as they learn to “fly” the new platform.

<p>Plan</p> <ul style="list-style-type: none">• Establish a vision for analytics, including key milestones.• Identify use cases that provide quick wins and demonstrate ROI.• Put together a new user onboarding schedule.• Determine the appropriate hardware and software needs to support your deployment.	<p>Define</p> <ul style="list-style-type: none">• Consider the data governance processes required to balance control, agility, and content freshness.• Determine and set SLAs and support processes.• Facilitate collaboration with clear roles and responsibilities in the analytics pipeline—including plans to delegate responsibilities as skills grow.
<p>Enable</p> <ul style="list-style-type: none">• Lay out clear paths for users to build upon and develop their skills.• Provide self-service data access that empowers them in their roles.• Help users create and maintain relevant content that delivers business value.• Grow a data-driven community with additional resources and activities.	<p>Measure</p> <ul style="list-style-type: none">• Establish metrics to measure user engagement and usage.• Track actual vs. expected content consumption.• Monitor server utilization and performance.• Prepare for new data requests and increased demand.



MYTH #5

Modern BI means ungoverned, self-service chaos

Data governance can mean different things to different people, but its serious nature is universally understood. As security, governance, and risk mitigation are core IT functions, IT has naturally safeguarded the organization's data like the treasure it is—flashing teeth and fiery breath when necessary to protect it. Although modern BI promises to share data with everyone, it certainly doesn't mean the masses will charge with swords unsheathed to take what isn't theirs. Rather, a modern governance framework helps business users participate in data and content security, access, and freshness as a shared responsibility.

MYTH #5

As guardians of the organization’s data integrity, IT is wary of an ungoverned, wild west wherein unfettered data access and rogue content risk creating confusion or contradictions. But moving from top-down, IT-led business intelligence to a modern self-service model of enablement doesn’t mean a drastic change in governance overnight.

Initially, IT may retain more traditional roles in regards to data access, metadata and content management, and site administration. Over time, IT should delegate responsibilities to properly trained business users to help the modern analytics deployment scale.

“We need to enable the business to create things we can never even imagine as an IT department. We just can’t create those things in an ivory tower.”

- Steven John, CIO, AmeriPride

[Learn how AmeriPride increased governance, collaboration, and customer success >](#)

It’s crucial to keep in mind that different kinds of data will require different levels of governance. Most importantly, governed self-service analytics at scale should be considered an ongoing, iterative journey rather than a destination. Your governance model will succeed if you can adapt to evolving requirements and keep users informed, empowered, and in compliance with your company’s policies as engagement grows.

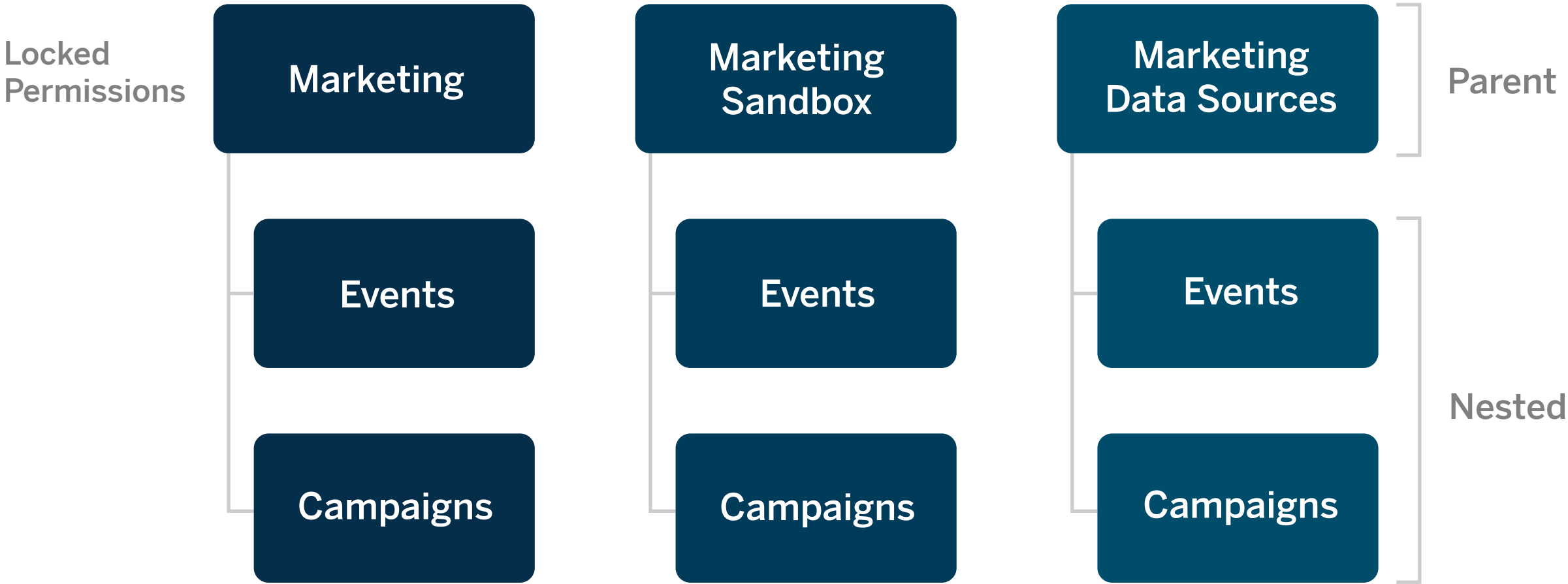


Tableau offers a governance framework comprising data governance and content governance.

Here are a few examples of ways to empower the business as your deployment scales:

- Create clear guidelines so the appropriate users can build the skills to publish and certify their own data sources while complying with governance policies.
- Configure automatic database and content permissions based on user roles to provide access to the trusted data that matters most to users. Leverage your existing authentication standards—whether Kerberos, SAML, SSL, Active Directory, client certificates, etc.
- Automate, embed, and extend Tableau to fit specific business requirements or address specific workflows. For example, you can build a script to log in, create new user accounts, generate a subscription, and so on.
- Maintain separate hierarchies for sandbox (experimental, test) projects from your production (live, certified, promoted) projects. This simplifies inherent content permissions for project leaders or site administrators managing the content.

Apply permissions at the project level to separate sandbox and live projects.



[Learn more about governed self-service analytics at scale >](#)



MYTH #6

The transition to modern BI is just too complicated to be done

Deploying a new solution while maintaining important day-to-day work is no simple commitment. Occasionally, organizations navigate most of the twists, turns, and complexities of the project only to be met by a beastly complication in the final stretch. It's a great disappointment to reach the end of the maze and find your new solution is half success, half failure. You'll need an experienced navigator with a solid, strategic framework to help you find success—but it can be done!

MYTH #6

If you relate to this fear, you’ve probably tried to deploy a new technology solution and missed critical deadlines, overspent your budget, or fell short to deliver on the promise of the solution. It’s a legitimate concern to spend so much time and effort on a complex deployment just to have it fall flat, even if certain forces are outside of your control. It’s not always easy to anticipate the speedbumps, roadblocks, or dead-ends that appear during your journey, nor is it viable to take internal resources away from their important work for long.

There’s good news: You don’t have to do it alone. The industry is full of BI experts, and in fact, we recommend you find a strategic partner—a consultant or systems integrator—with the right expertise and framework to help you navigate the transition. This partner should have prior experience in migrating or replacing traditional BI with the modern analytics platform you choose. Additionally, they should have a deep understanding of the nuances of your needs and how to satisfy them through modern BI. Finally, they should have a solid framework and be able to help you outline an appropriate timeline to deploy your new solution.

Here is an example framework to make your transition from traditional to modern BI successful:

- **The first phase** involves planning, scoping, an inventory of your reporting and needs, and a closer looking at your financial model to develop the necessary strategy for the migration. During this time, you’ll also need to establish or evaluate your cross-functional steering committee, organizational roles and responsibilities (including mapping users to license roles), and key aspects of your data and governance

strategy that will set users up for early successes.

- **The second phase** is the heavy lifting to migrate the most impactful modern BI content. Since traditional reports have often been designed according to user requirements developed before modern BI capabilities were largely available, this is a good time to work with the audience for reporting to give them best-in-class analytics. As key use cases are built with Tableau, you may continue to solidify processes around reporting, governance, maintenance and monitoring, etc., begin working with workbook and data source prototypes, and kick off user training.
- **The final phase** is for validation during a coexistence of your traditional and modern systems. As users will ramp up on your new modern solution, you should expect them to validate that it not only meets their reporting needs, but that visual, self-service analysis offers new insights to their data and benefits to the business. Ideally, you’ll sunset or scale down your traditional platform as you reach the maintenance contract renewal period.

Of course, this process will look a little different for every organization, depending on the traditional BI system you have, the complexity of your business logic, the center of gravity of your data, and the scale of your rollout. Ultimately, a successful framework is all about timing and coordination.

[Learn more about making the move to modern BI with Tableau >](#)

WHY TABLEAU?

“By using Tableau, we were able to accelerate the processes considerably. This allows us to automate and standardize most of the standard reporting. I would say that we now have about 30% more time to dig deeper and carry out analyses that are more specific. In this way, Tableau helps us to evaluate the exponentially growing volumes of data and to keep pace with the changes in our industry.”

- Christian Novosel, Head of Strategic BI Initiative at Lufthansa

[Learn how Lufthansa consolidated data sources and scaled self-service BI >](#)

The Tableau platform provides the greatest depth and breadth of analytical capabilities to deploy the data that matters across your organization—including flexible data access and powerful data prep capabilities. Solid security and governance features keep data in the right hands and ensures users can find the accurate and trusted content they need to make decisions.

Deploy Tableau where you want—on Linux or Windows, on-premises, in the public cloud, or fully hosted SaaS, even embedded in web portals and applications. Work with any shape, size, and type of data, whether on-premises, in cloud applications, or flat files, and analyze your data where it is—live or in-memory. And we provide a full suite of API for extensibility. Flexibility and choice are Tableau philosophies.

Evaluating a solution doesn’t stop at the software. You should also consider how it will be rolled out, enabled, scaled, and supported to ensure adoption and engagement. One of the most valuable assets that differentiates Tableau, speeds up time to market, and ensures lasting engagement is our community. We’re fortunate to have a passionate, global user base with more than 150,000 active participants in our Community Forums and 165,000 participants in 500 user groups worldwide. We often hear from our customers that “the community will not allow you to fail.”

Finally, everything we do is driven by our mission to help people see and understand data. We are solely focused on the modern BI and analytics market, with an unmatched investment into research and development. We focus on building data skills and internal communities that drive ongoing success as your data strategy and business needs evolve and expand.

“We changed our course with our increase to 12,000 Tableau users along with a new leadership direction that was heading towards self-service analytics. We wanted to change into a more supportive and nurturing environment and the users came with us in this journey.”

- Gessica Briggs-Sullivan , Tableau Server Administrator, Charles Schwab

[Learn how Charles Schwab grew their Tableau adoption and Center of Excellence >](#)

ABOUT TABLEAU

Tableau is a complete, easy-to-use, enterprise-ready visual business intelligence platform that helps people see and understand data through rapid-fire, self-service analytics at scale. Whether on-premises or in the cloud, on Windows or Linux, Tableau leverages your existing technology investments and scales with you as your data environment shifts and grows. Unleash the power of your most valuable assets: your data and your people.

Additional Resources:

[Tableau for the Enterprise: IT Overview](#)

[Governed Self-Service Analytics at Scale](#)

[Modern BI & Analytics Evaluation Guide](#)

[Why IT and BI Professionals Choose Tableau](#)

[Why Modern BI?](#)

