



# Healthcare Analytics Hub Starter Kit

Takashi Binns | Sales Consultant, Healthcare, Tableau

Barry Chaiken, MD | Clinical Lead, Healthcare, Tableau

# Agenda

## **Welcome**

Barry Chaiken, MD Clinical Lead and Takashi Binns, SC, Healthcare

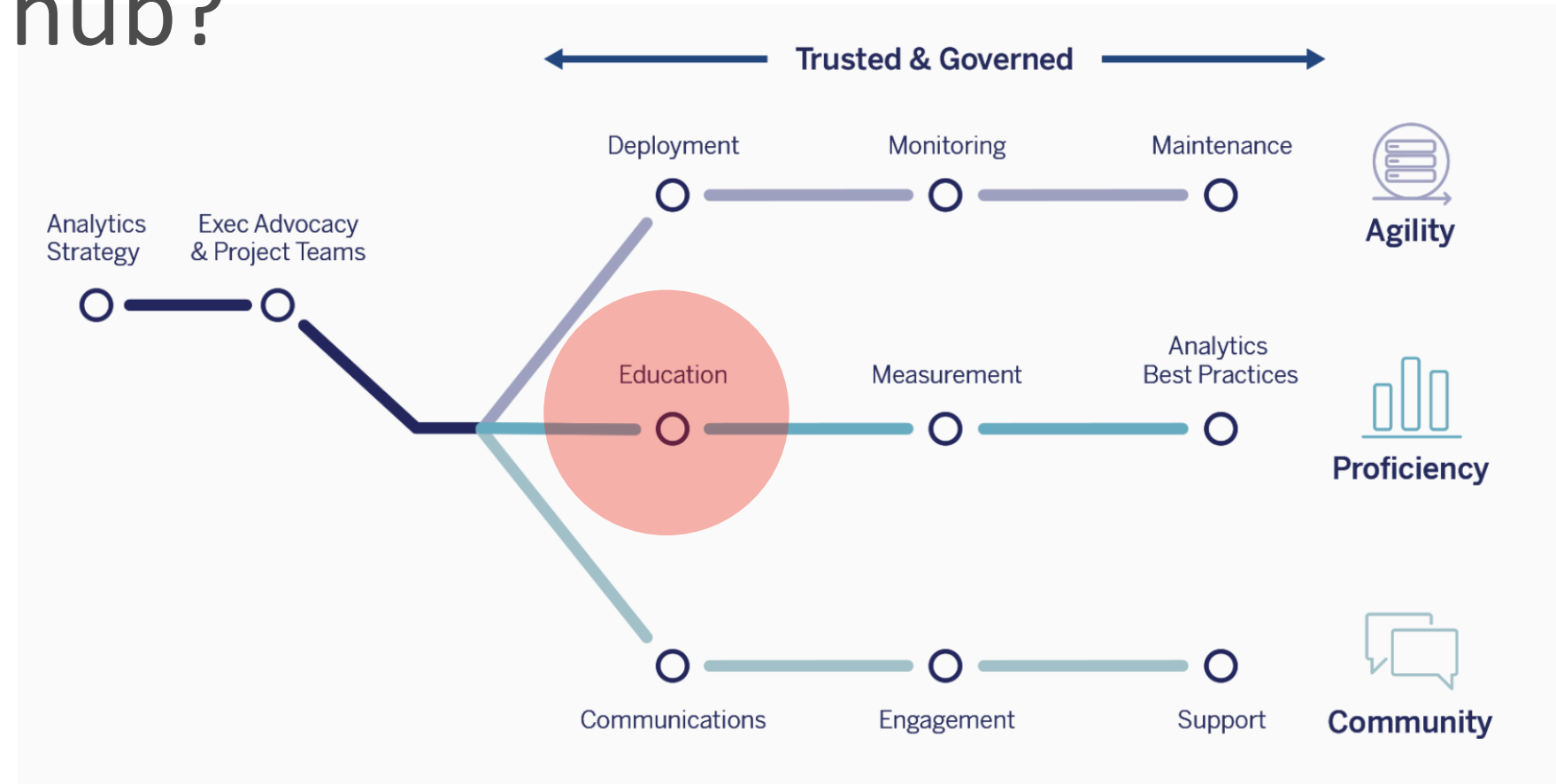
## **Overview**

What is the Healthcare Analytics Hub Starter Kit, how it impacts healthcare organizations

## **Live Demo – How to get Started**

## **Wrap up – Q&A**

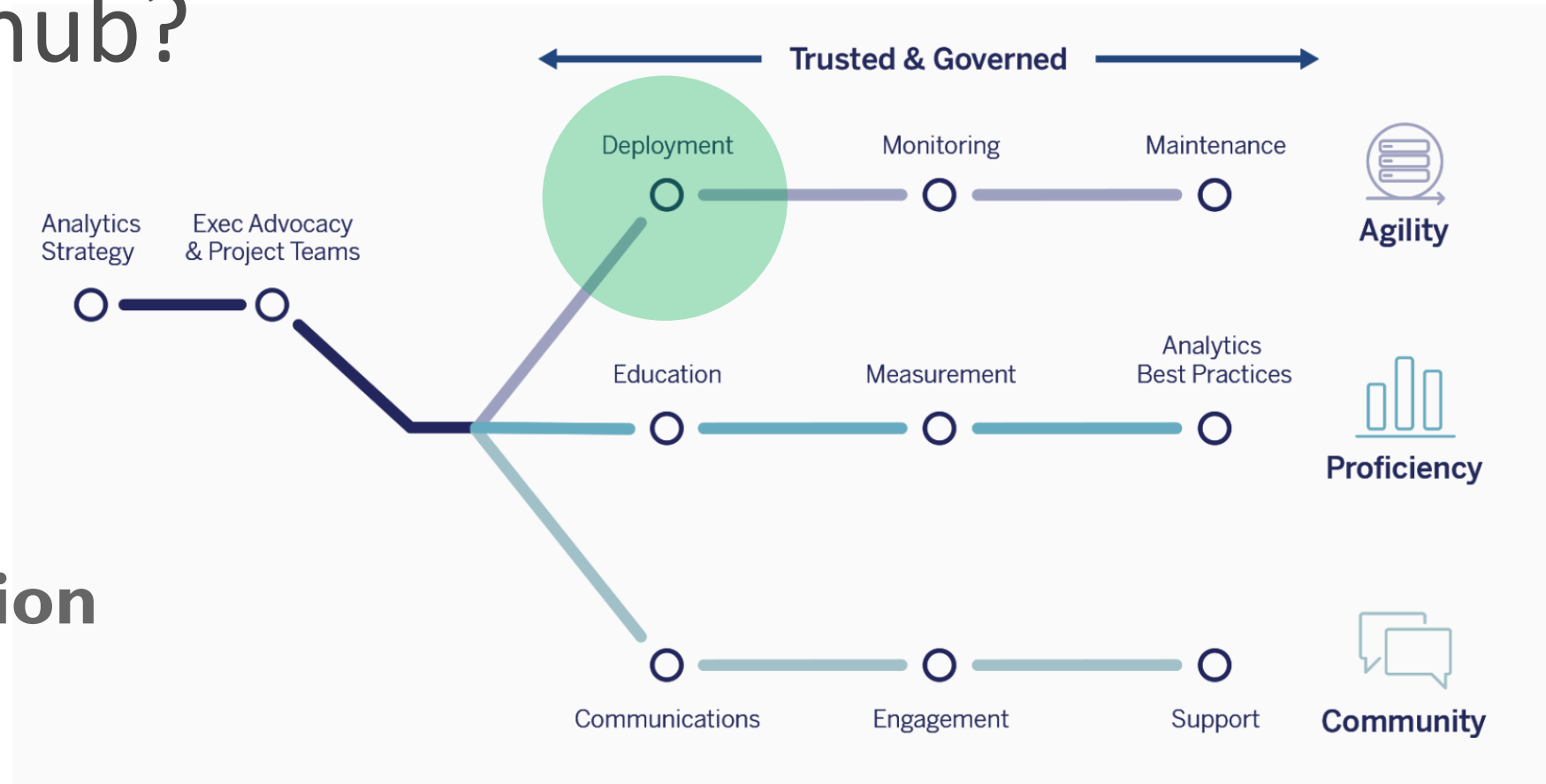
# Why an analytics hub?



**Healthcare knowledge workers (physicians, nurses) are focused on patient care first**

Learning – and remembering - how to access and consume analytics can be challenging when it's not your primary focus.

# Why an analytics hub?



## The solution: **lower friction**

Put it where they work...

Embed in EHR (clinical)  
Embed in portal (other)

Put it in their pocket...

Deploy on mobile

Make it simpler...

Promote content they  
should be viewing

# What are our customers doing?

... building it themselves

The screenshot displays the NYULMC Analytics Center dashboard. At the top, there is a navigation bar with 'Dashboards' and 'Reports' tabs. The main content area is divided into several sections:

- Dashboards Full List:** A list of dashboard categories including Enterprise, VBM, and CIN.
- Dashboards by Category:** A grid of dashboard options organized into categories like Patient Care, Research, Administrative Services, Education, and MCIT.
- My Favorite Dashboards:** A list of selected dashboards such as Dashboard Usage, Heat, Inpatient Analysis, and Quality, with a 'Browse Catalog' button.
- My Favorites:** A sidebar panel showing a list of favorite dashboards with star ratings and a 'View Full Catalog' link.
- Messages:** A sidebar panel containing system notifications and tips, such as 'New Medication Finance Dashboard is now available under Administrative Services' and 'Please note: When logging in remotely, select advanced from the VPN menu'.

The main dashboard area shows a data visualization with a chart and a table of metrics, including values like '0.37%', '0.68%', and '1.85%'. A large, semi-transparent watermark 'NYU LANGONE' is visible across the center of the dashboard.

# What about customers without a solution?

Tableau Server interface for Piedmont Healthcare. The interface includes a search bar, a list of recently accessed reports, and a bar chart showing server users by day. The bar chart data is as follows:

Day	Users
1	40
2	70
3	66
4	69
5	76
6	78
7	77
8	75
9	64
10	68
11	82
12	78
13	77
14	66
15	89
16	69
17	76
18	69
19	62
20	73
21	78
22	71
23	69
24	81
25	74
26	68
27	69
28	78
29	91
30	89
31	99
1	72
2	87
3	91
4	81
5	80
6	82

Server stats: Subscriptions: 111, Users: 562, Hits: 688,916. Top trending reports: Report Portal (45 hits, 15 users), Provider Selection Dashboard (41 hits, 8 users), CV Surgery Dashboard (37 hits, 8 users), Enterprise Dashboard (28 hits, 5 users), Short Stay Dashboard (24 hits, 3 users).

## • Tableau-on-Tableau

- Create a dashboard that looks at your server's content, and use it as the homepage
- No coding required, just Tableau Desktop skills
- Mark Jackson's [example](#)

## • New Vizportal Changes

- 2019.2 - Updated UI, *Most Recent* views, etc
- 2019.3 – new search page, data catalog
- 2019.4 – view recommendations engine

# What Are We Offering In This Starter Kit?



- An easy-to-deploy sample of what an analytics hub could look like
  - Not an OOTB product, this is a sample implementation
  - ~30 minute deployment



- Customizable
  - Easily configurable
  - Pick which pages to make available
  - Change colors/fonts/icons



- Extensible
  - Built on open source technologies
  - Leverages Tableau REST APIs, so no Tableau dev experience required

# Where do I find the Starter Kit?

Download the starter kit:

[www.tableau.com/resources/healthcare-analytics/healthcare-analytics-hub-starter-kit](https://www.tableau.com/resources/healthcare-analytics/healthcare-analytics-hub-starter-kit)

Review Blog post:

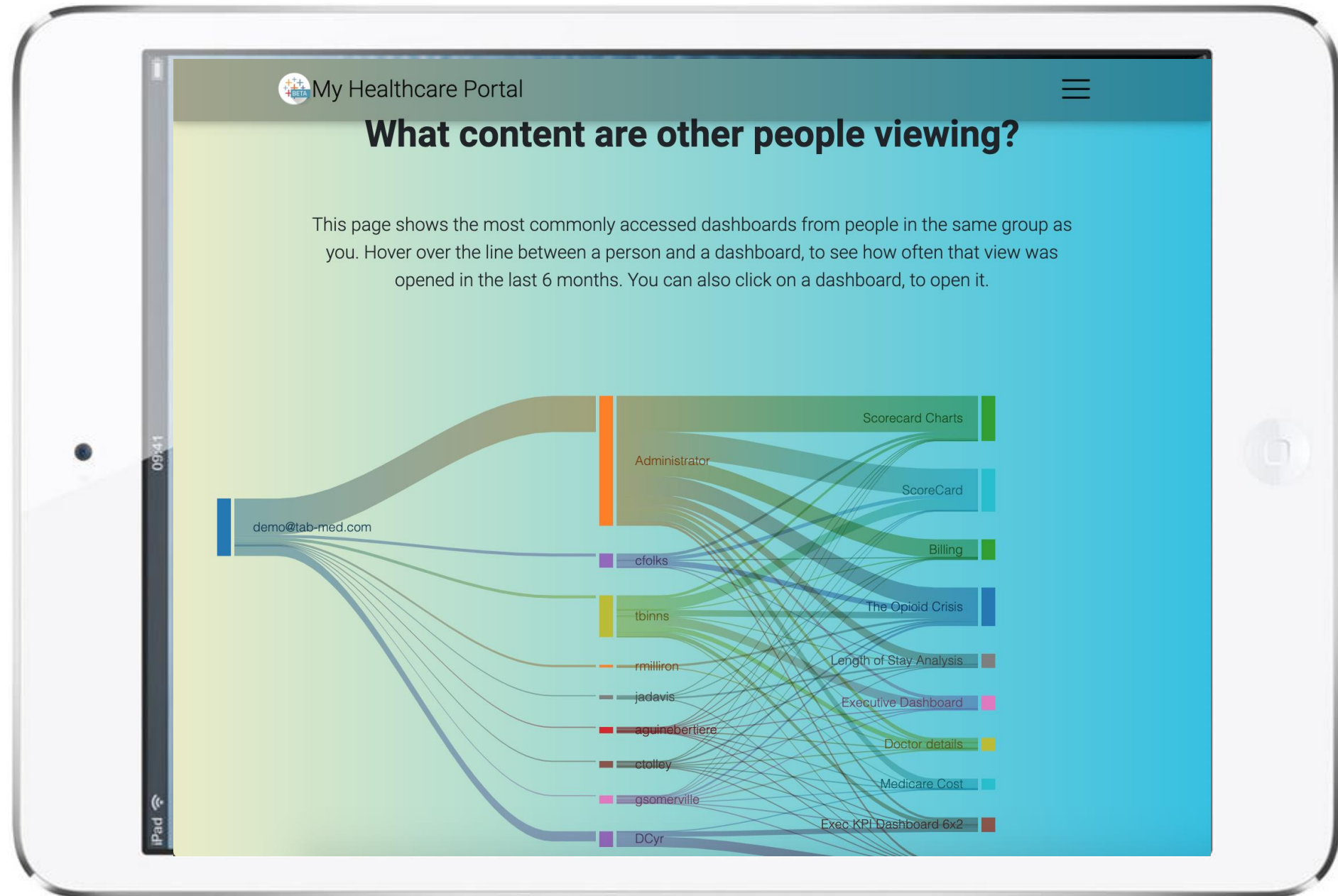
[www.tableau.com/about/blog/2019/10/healthcare-analytics-hub-starter-kit-get-data-you-need-faster](https://www.tableau.com/about/blog/2019/10/healthcare-analytics-hub-starter-kit-get-data-you-need-faster)

(See resources section in the webinar console)





# Demo



# License Requirements

- Licenses needed
  - 1+ Creator
  - Explorers/Viewers to login
- Server
  - Existing Tableau Server Environment
    - (Not available for Tableau Online)



# Implementation Requirements

**Option 1:** Customer implemented

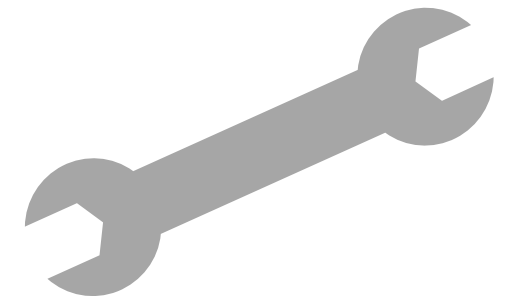
**Option 2:** Pro-Services

- Different from other starter kits, as it's not OOTB solution
- Services can work w/ customer to provide Tableau API assistance

**Option 3:** Commercial portal (Interworks)

• Post-implementation Support

- Tech Support will not take requests on the 'solution' but will field how-to and break/fix product issues
- On-demand support from Tableau pro-serve will require 2-3 week lead time



# Alternatives: Content Management Systems



**Cost:** Variable ~ some are open source platforms and some are paid

## Pros

- Typically easy to deploy
- Some are free
- Usually easy to create new pages/content

## Cons

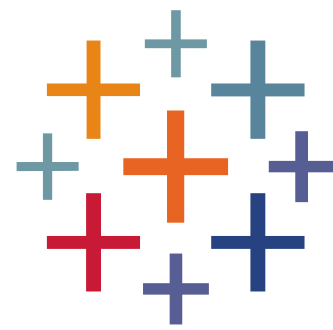
- Most do not allow running 3<sup>rd</sup> party code
  - JavaScript / API Calls
- Embedding is not always clean
- Some do not support SSO

# Wrap-up

## Q&A

### Next steps you can take:

- Visit the Healthcare Analytics Hub Starter Kit Blog and download the Starter Kit (see resources)
- Tune in for our next healthcare webinar, November 20<sup>th</sup> featuring Lehigh Valley Health System and Tableau – It's gonna be EPIC
- TC19! Propel your skills, connect with our community, get inspired ([tableau.com/tc](https://tableau.com/tc))



+ a b l e a u<sup>®</sup>