



# Trust, visibility, and governance for self-service analytics at scale

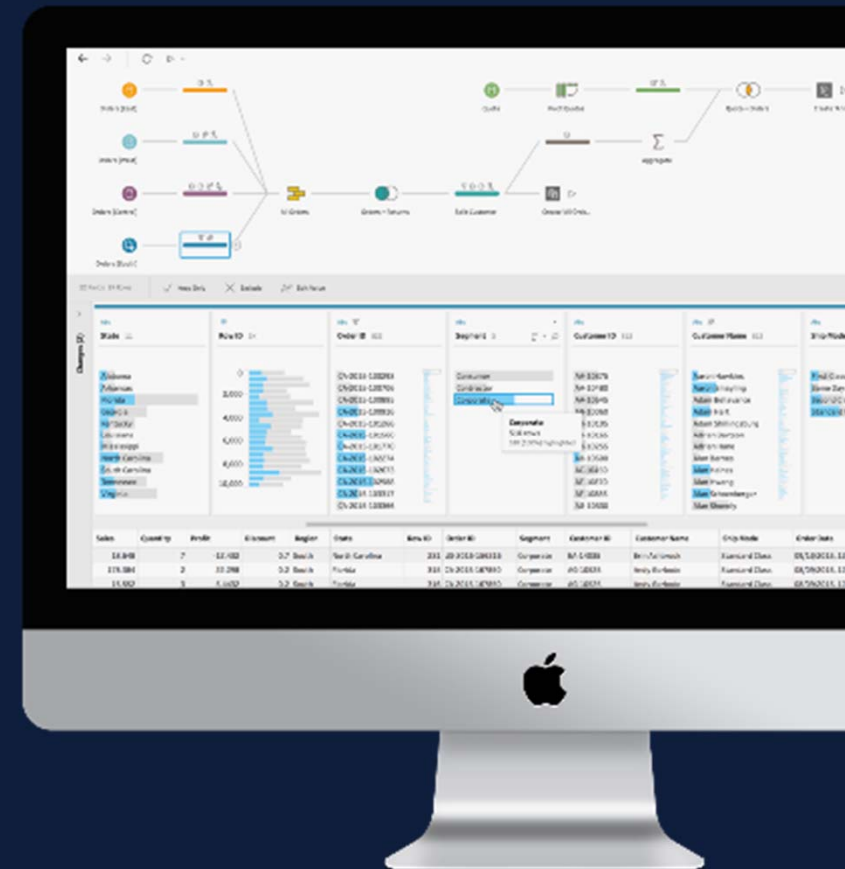
Bringing data management to your analytics offering

Tanushree Rohera,  
Solution Engineer



# Agenda

1. What is Data Management?
2. What is Tableau's role in Data Management?
3. How does this play out (Product demo)
4. Q&A (moderated on the panel)



# What is Data Management?



T-Rex Mobil



Urshila,  
Sales Manager

**Goal :**  
Monitor Sales Opportunities  
& Pipeline



Shilpa,  
Data Systems Lead

**Goal :**  
Ensure the data systems run  
and data is correct



Prashant,  
BI Analyst

**Goal:**  
Ensure various business teams  
have required analysis

# What is Data Management?



**Urshila,  
Sales Manager**

Where is the data coming from? Are others using this data? Who do I reach out to if there are concerns?



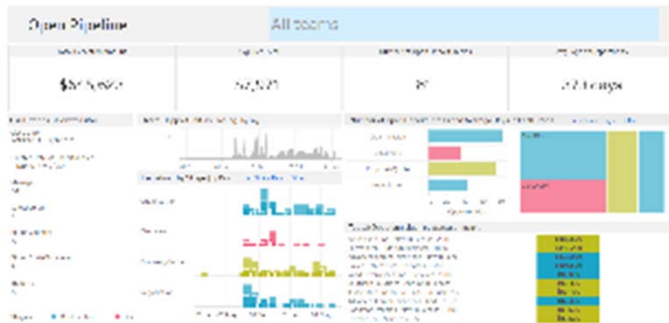
**Prashant,  
BI Analyst**

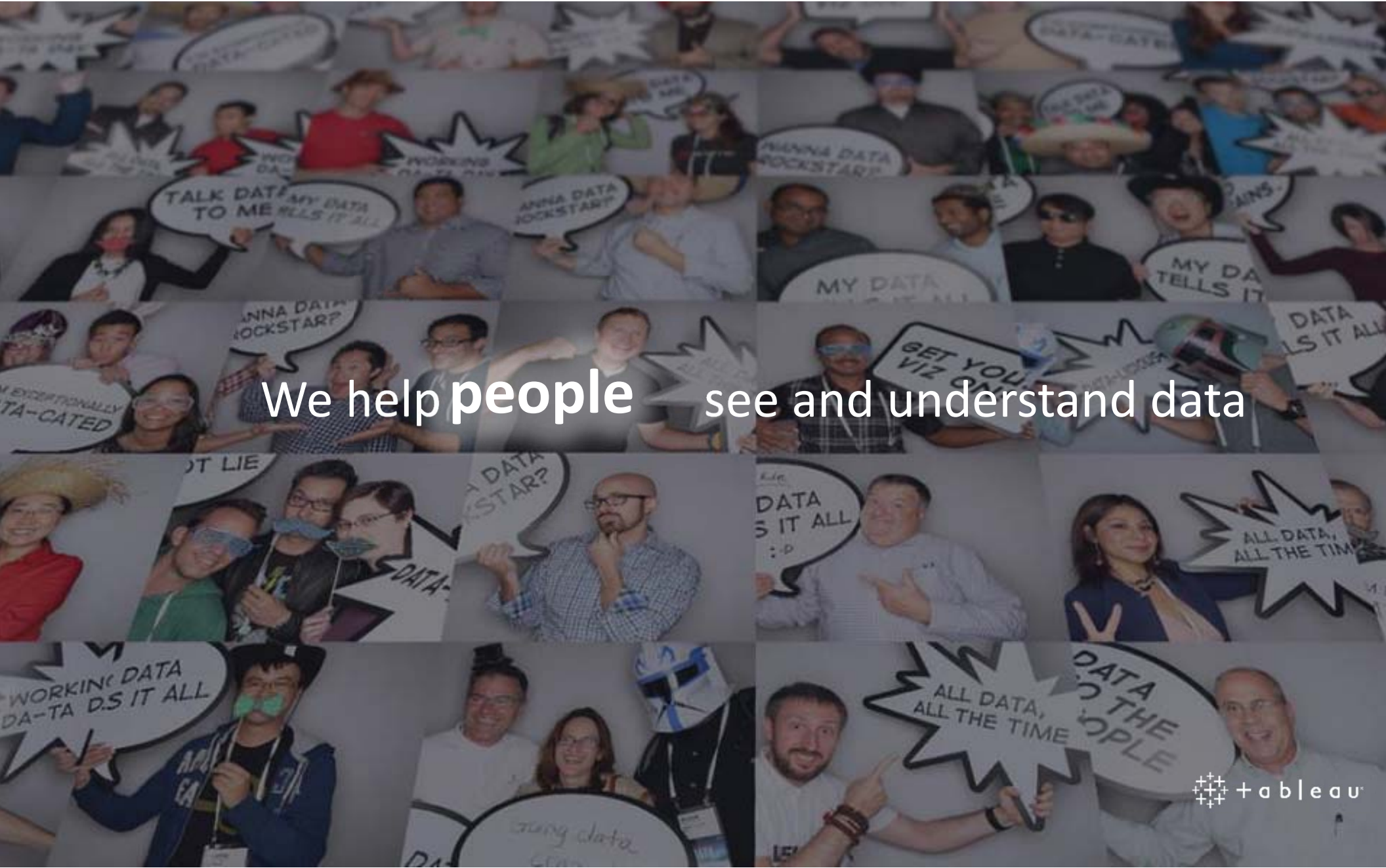
Which Data Source should I use? I need to bring in my own data-set. How should I go about doing that?



**Shilpa,  
Data Systems Lead**

Who's going to get affected when I change my source database systems? Are there new data sources being published?





We help people see and understand data

# What is Tableau's role in Data Management?



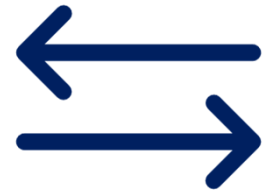
Trust



Discoverability



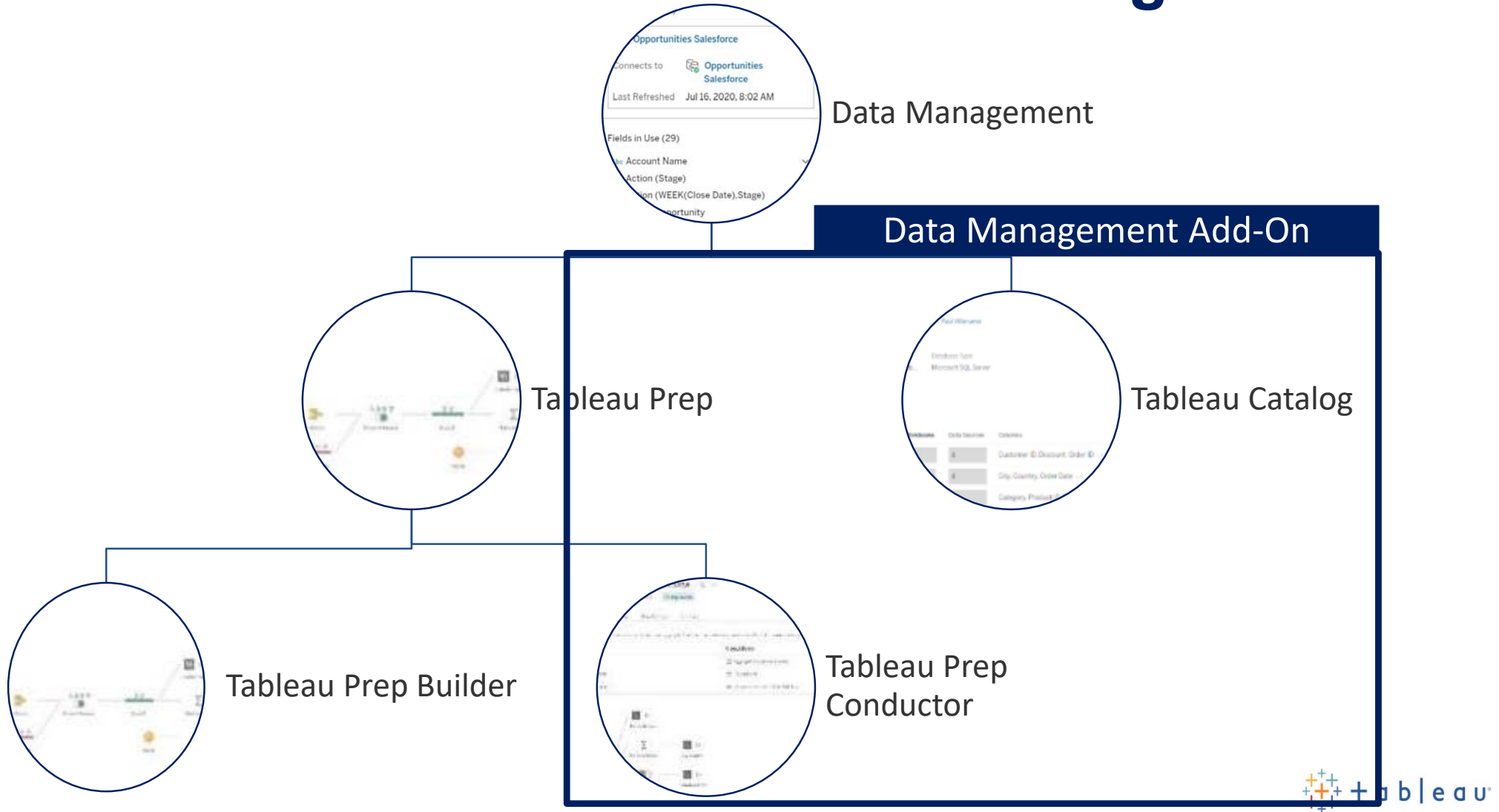
Scale



Integration



# What constitutes Tableau Data Management?



# Revisiting T-Rex mobil



**Urshila,  
Sales Manager**

Where is the data coming from? Are others using this data? Who do I reach out to if there are concerns?



**Prashant,  
BI Analyst**

Which Data Source should I use? I need to bring in my own data-set. How should I go about doing that?



**Shilpa,  
Data Systems Lead**

Who's going to get affected when I change my source database systems?





# Revisiting T-Rex Mobil



**Urshila,  
Sales Manager**

- Where is the data coming from?
- Are others using this data?
- Who do I reach out to if there are concerns?

# Revisiting T-Rex Mobil



Prashant,  
BI Analyst

- Which Data Source should I use?
- I need to bring in my own data-set. How should I go about doing that?

# Revisiting T-Rex Mobil



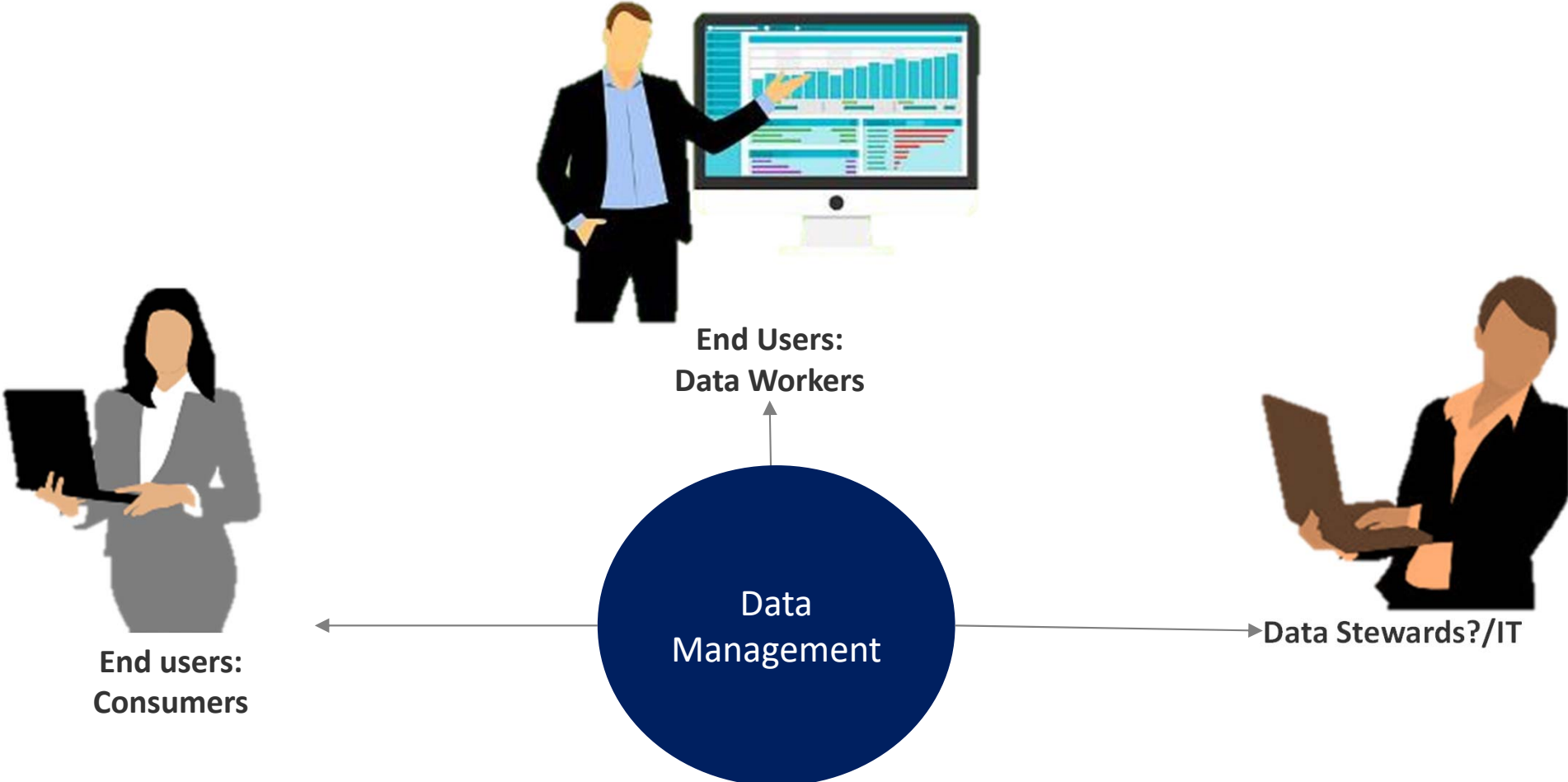
Shilpa,  
Data Systems Lead

- Who's going to get affected when I change my source database systems?
- Are there new data sources being published?

# Summary



# What is Data Management?



# Next Steps

Look for the 'Additional resources' PDF in the 'Resources' Tab.

1. Do contact your account manager!
2. Explore Tableau Prep:
  1. [Download Tableau Prep](#)
  2. [Check out the Prep Test Drive!](#)
3. Take [an interactive demo](#) for the server UI.

