



Tableau, Inc.
Lake Union Center
1441 North 34th Street, Suite 100
Seattle, Washington 98103
Phone: (206) 633-3400
Fax: (206) 633-3004

Tableau Visitor Information: Lake Union Center (1441)

Directions

Directions from northbound I-5:

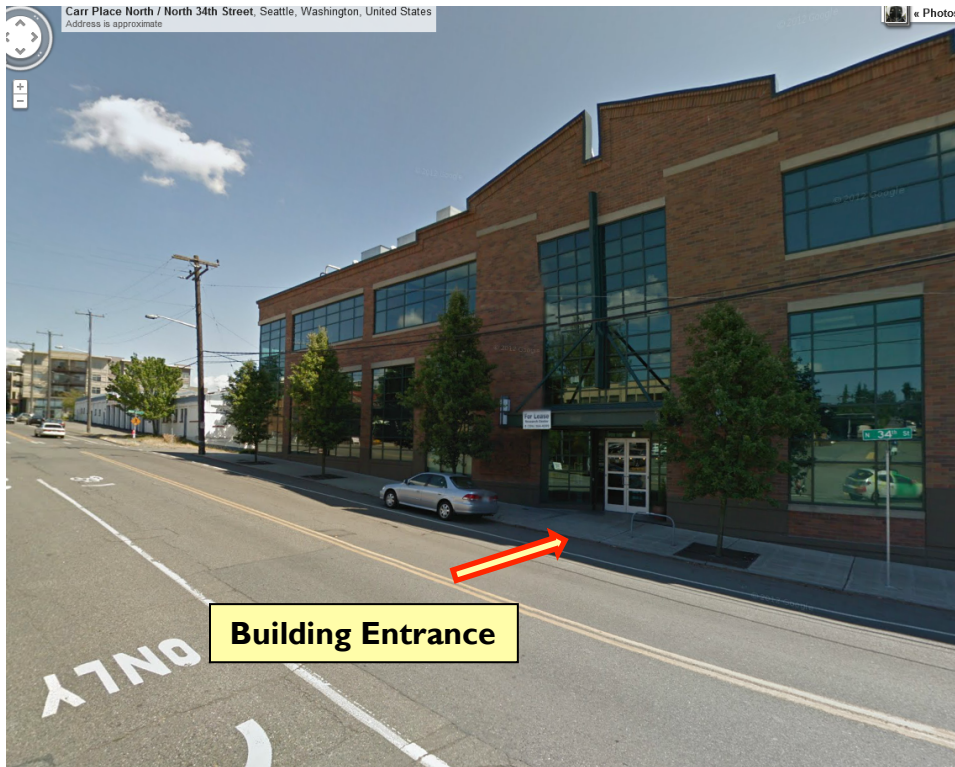
- Take Exit 167 toward Mercer St
- Turn Right on to 4th Ave N
- Continue onto Fremont Ave N
- Turn right on to N 34th St
- The building will be on your right between Stone and Woodlawn
- There is some free street parking available in the surrounding neighborhood

Directions from southbound I-5:

- Take Exit 169 toward NE 45th Street
- Turn left onto NE 45th Street from off-ramp
- Turn right at Stone Way N
- Turn left at N 34th Street
- You will see the Lake Union Center on your right on 34th and Woodlawn, just across the street from Essential Baking
- Turn left at Troll Ave N

Guest Parking

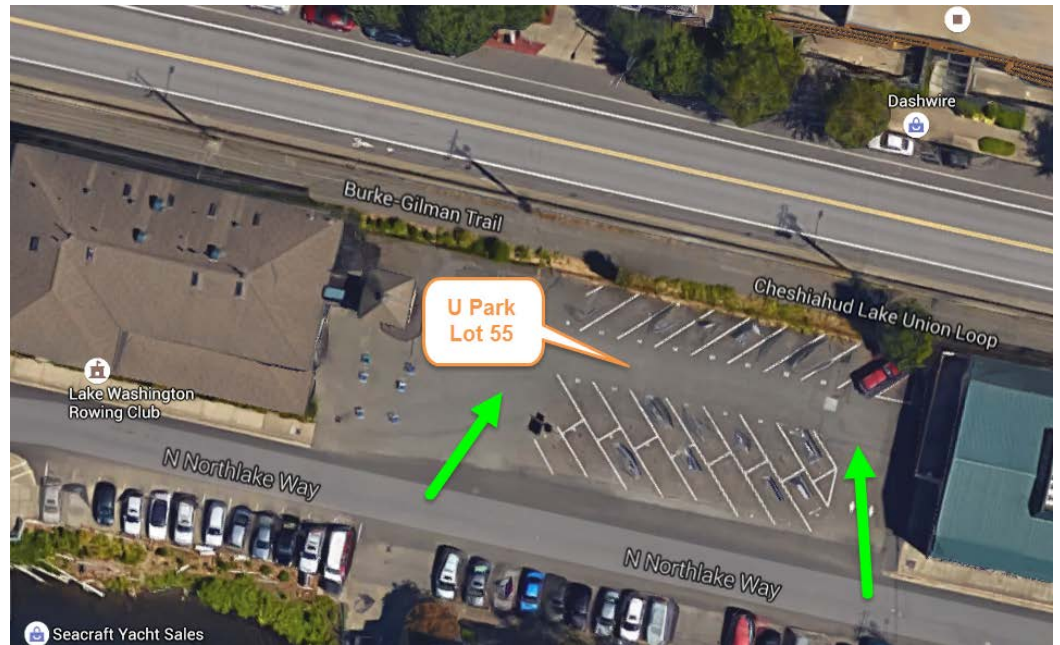
- *There is no Guest parking available in the building.*
- There is some free street parking available in the surrounding neighborhood and a Upark lot on Stone Way and N. 34th street (see Nearby Off-Site Lots Below)



Nearby Off-Site Lots

Location:

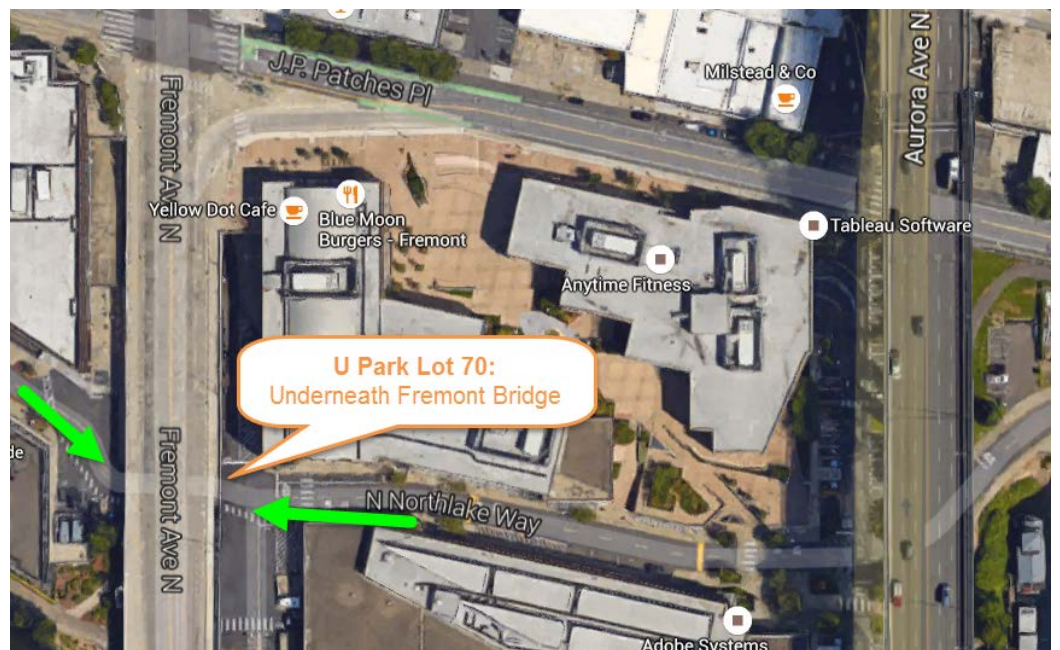
Lot 55: 946-1000 N
Northlake Way Seattle, WA
98013

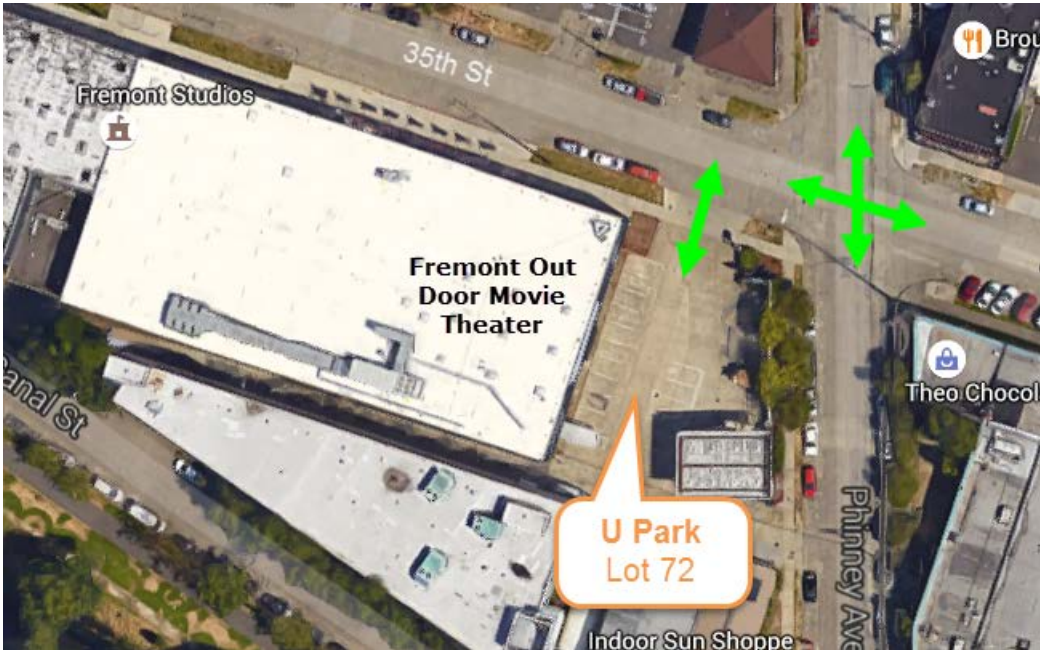


Lot 66: 1090 N Northlake
Way Seattle WA 98103



Lot 70: 701-735 N Northlake
Way Seattle, WA 98103



<p>Lot 72: 3401-3499 Phinney Ave N Seattle, WA 98103</p>		
<p>How to access the lot</p>	<p>All lots are open and can be accessed by local streets.</p>	
<p>Motorcycle Parking</p>	<p>There is no designated motorcycle parking offered.</p>	
<p>Days/Hours of Parking:</p>	<p>No time limit with monthly parking pass Pass authorizes 24/7/365 unless otherwise notified by U Park System in case on an event.</p>	
<p>Height Restriction</p>	<p>There is no height restriction in these outdoor lots.</p>	
<p>How lot is monitored</p>	<p>All lots are monitored by U Park System : <u>Mailing Address:</u> U Park System P.O. Box 9652 Seattle, WA 98109</p>	<p><u>Email Address:</u> Questions about notices: notice@u-parksystem.com</p>
<p>Is parking secured</p>	<p>Parking lots are not secured.</p>	
<p>Is parking lot shared?</p>	<p>Parking lots are open to the public.</p>	
<p>Overnight Parking</p>	<p>You may park your car overnight with proper permit and payment however please note the lot is not secured and open to the public.</p>	
<p>How many parking stalls</p>	<p>Lot 55 = 10 Lot 66 = 25 Lot 70 = 18 Lot 72 = 20</p>	
<p>Disabled Parking</p>	<p>If you need disabled parking we can offer you a spot in our building: please email globalservices@tableau.com a few days before the training so we can arrange.</p>	